



**Sensors**

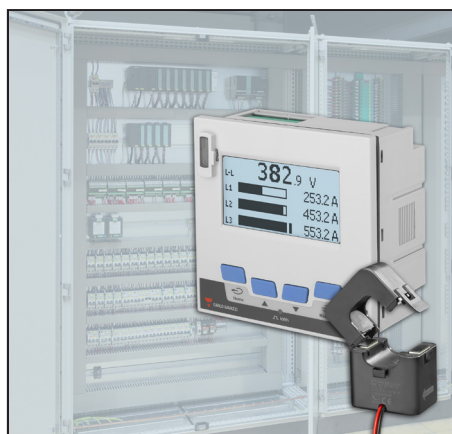


**Switches**



**Controls**

## Application notes



**Application Note : December 2019**

**Market involved : Energy efficiency**

**Product : WM15, CTA**

**Customer : System integrator and facility manager**

**Subject : Replacement of analog indicators for data collection via RS485**

### CUSTOMER ISSUE :

Main distribution boards are often equipped with three analog ammeters and an analog voltmeter connected to a commutator.

If the facility manager needs remote data collection, it is necessary to install a new digital meter, causing system outages and sometimes losing the accuracy current reading of the analogical devices.

### OUR SOLUTION :

The WM15 can be installed in an existing cabinet, exploiting the retrofit installation of split core current sensors like CTA, dramatically reducing the need of system outages.

The bargraphs, that shows visually the value of the currents, provides a real-time picture of the system status at a single glance, preserving the main benefit of analogical meters.

The RS485 Modbus RTU port makes data available to the Modbus masters like SCADA, PLC or BMS.

### BENEFITS :

- Fast installation thanks to split core CTA current transformers
- Quick setup wizard for easy configuration
- Embedded Modbus RTU communication without requiring additional modules
- Bargraph page including real time values of currents and system voltage
- Cost-efficient solution for retrofit application
- Cost- and time-saving solution also in the case of new installations